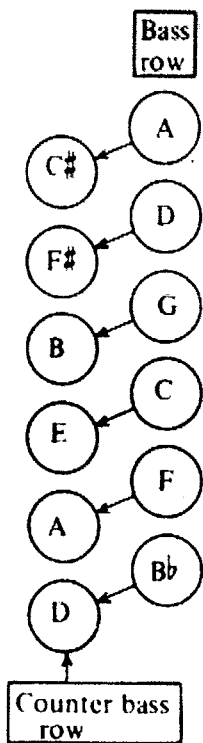


INTRODUCING THE COUNTER BASSES



The row of basses nearest to the bellow is called the **COUNTER BASS ROW**. The counter basses and the bass row are principally used to play melodies and bass solos. Study and memorize the following:

Counter bass to C is E = Count up three notes C - D - E

Counter bass to G is B = Count up three notes G - A - B

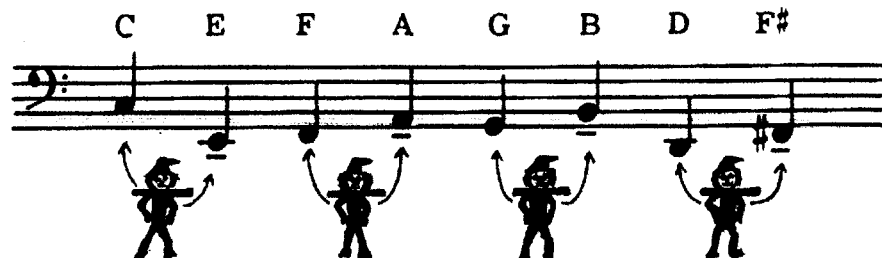
Counter bass to D - F# = Count up three notes D - E - F# add a sharp

Counter bass to A - C# = Count up three notes A - B - C# add a sharp

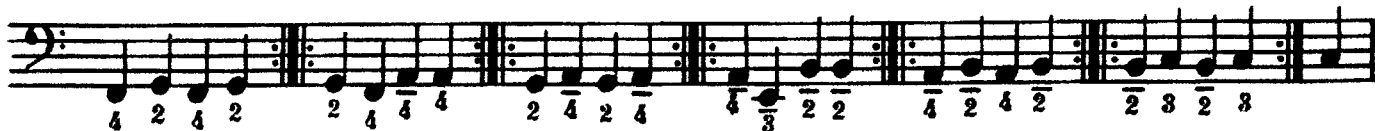
Counter bass to F - A = Count up three notes F - G - A

Counter bass to Bb - D = Count up three notes Bb - C - D

Counter basses are indicated by a dash below the notes.



PREPARATION FOR PLAYING THE SCALE



The C Major-Scale

