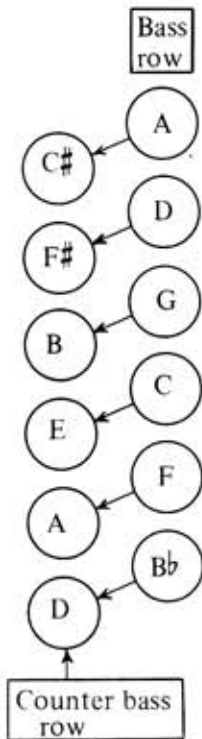


INTRODUCING THE COUNTER BASSES



The row of basses nearest to the bellow is called the COUNTER BASS ROW. The counter basses and the bass row are principally used to play melodies and bass solos. Study and memorize the following:

Counter bass to C is E = Count up three notes C - D - E

Counter bass to G is B = Count up three notes G - A - B

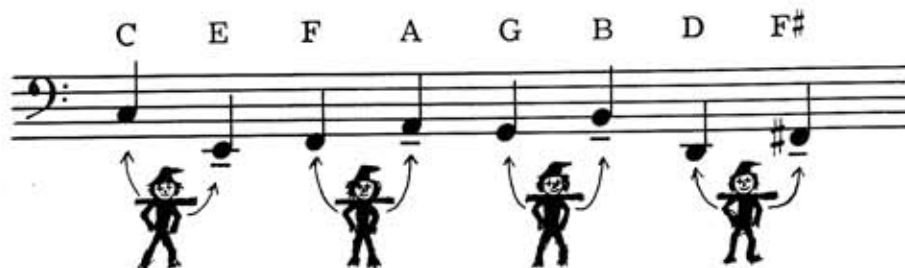
Counter bass to D - F# = Count up three notes D - E - F# add a sharp

Counter bass to A - C# = Count up three notes A - B - C# add a sharp

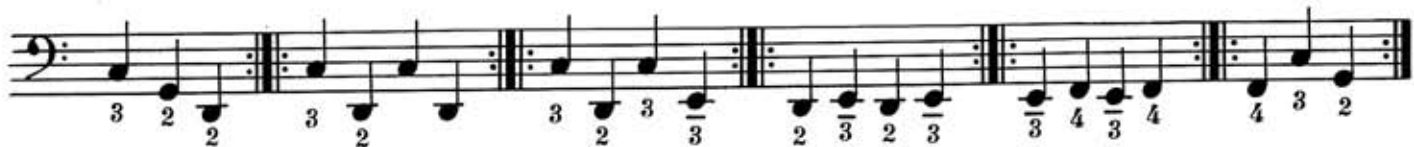
Counter bass to F - A = Count up three notes F - G - A

Counter bass to Bb - D = Count up three notes Bb - C - D

Counter basses are indicated by a dash below the notes.



PREPARATION FOR PLAYING THE SCALE



The C Major-Scale

