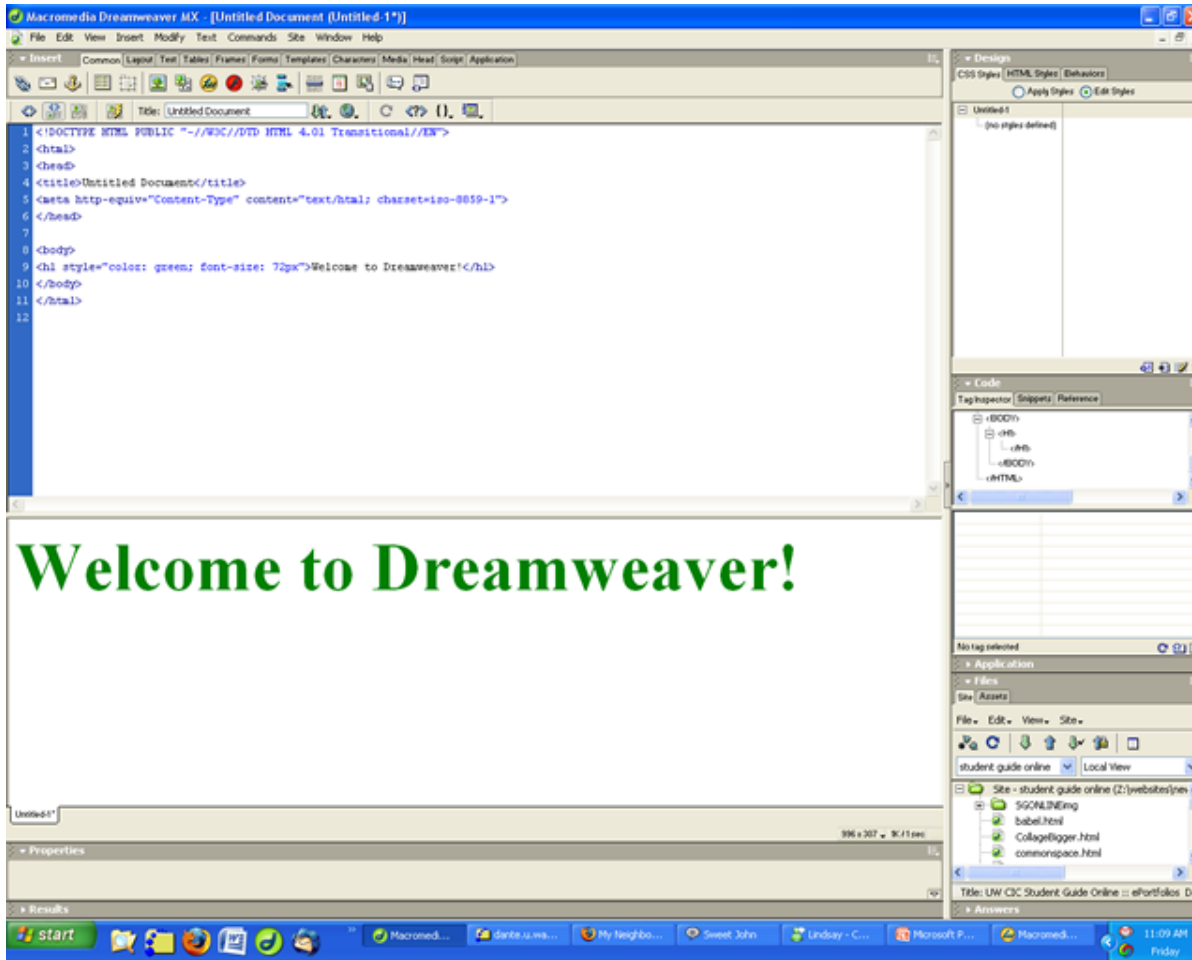


Building Websites in Dreamweaver

Letting the program do the work



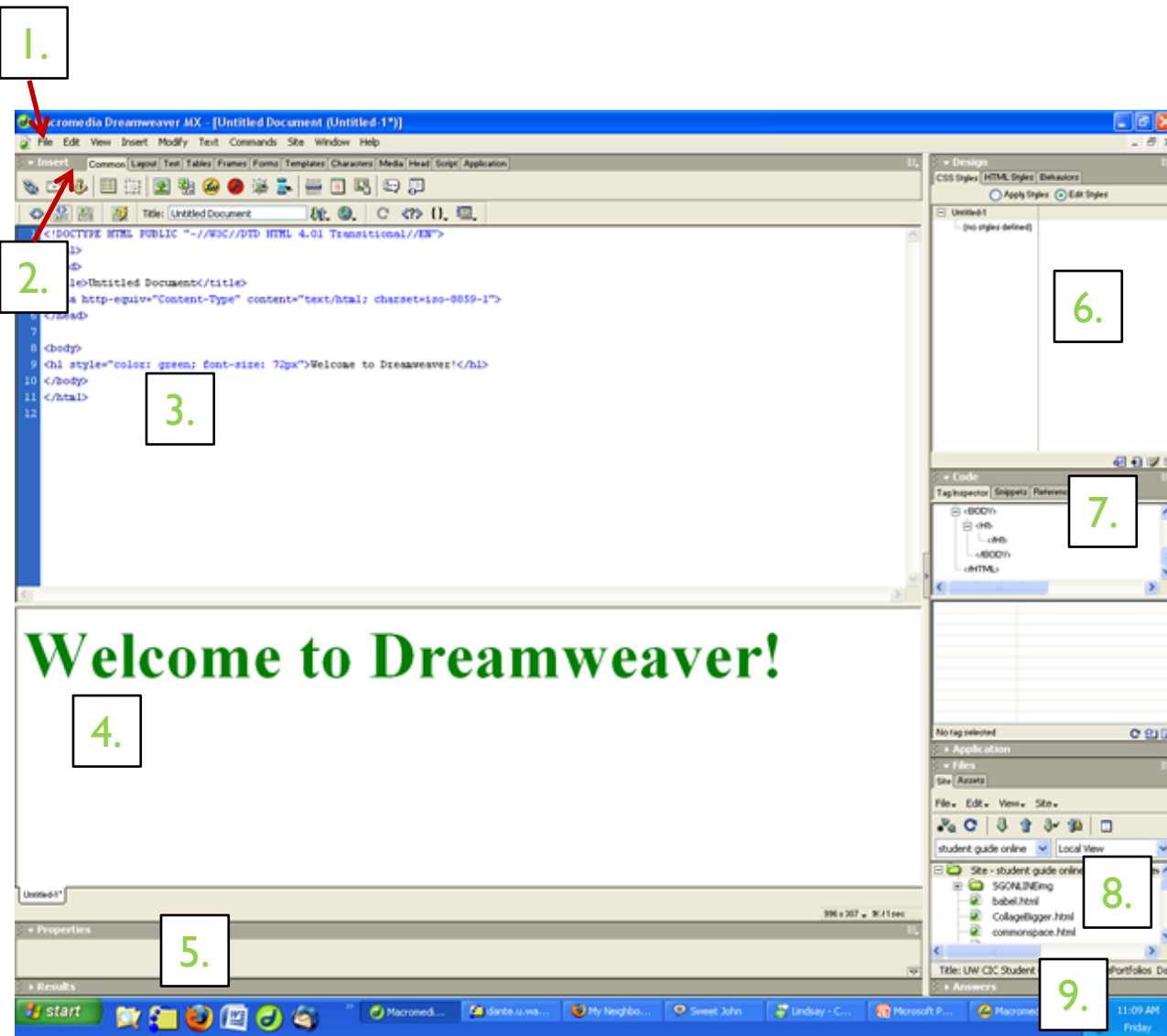
Why Dreamweaver?

- ✓ The industry standard for web composition
- ✓ Generate code with greater control and without all the mess
- ✓ Anticipates code, offers available modifiers
- ✓ Integrated use of CSS, Fireworks, and file management
- ✓ Builds nifty menus and roll-over images for you
- ✓ Tag Chooser explains the use of HTML tags, like a tutorial



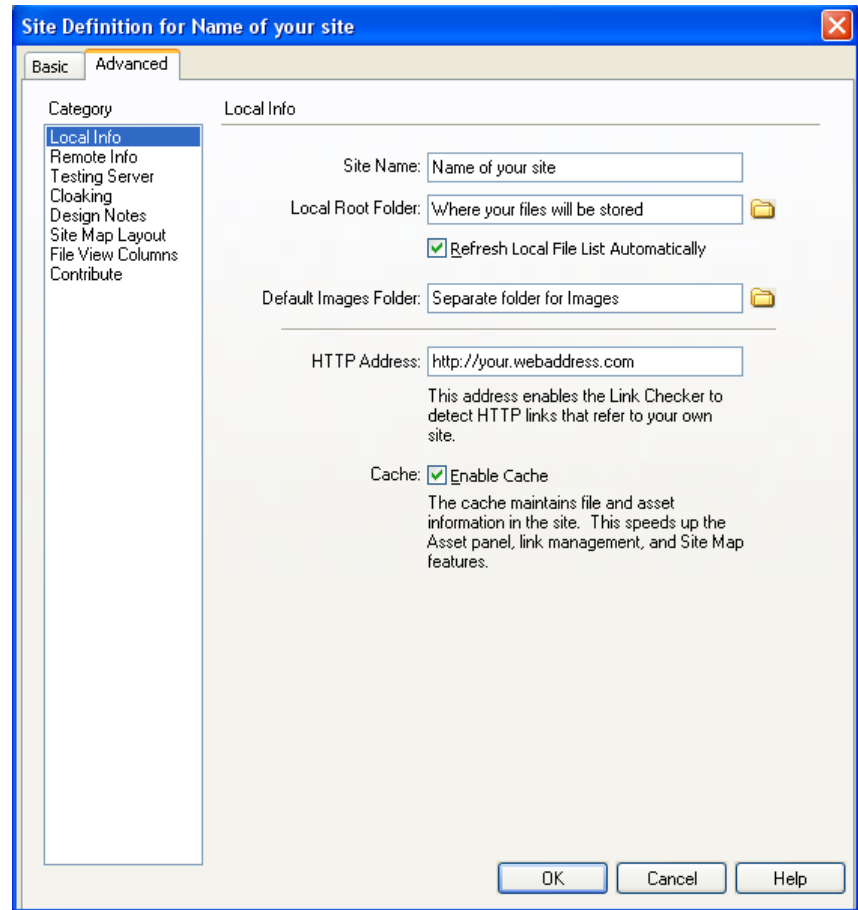
Basic Layout



1. Command Bar
2. Insert Bar
3. Code view
4. Design view
5. Properties Bar
6. CSS Design Menu
7. Code Inspector Menu
8. Files Menu
9. Answers Menu



Getting Started: Let Dreamweaver keep you organized

- ▶ In the Assets menu, click “Site”, then “New Site”
- ▶ Click the “advanced” tab and fill in the menu :
 - ▶ Name your site
 - ▶ Specify a folder where you will store files on your local computer. **N.B. This only names a folder on the computer you are working on**
 - ▶ Pick an image folder within your local root folder
 - ▶ Spell out your web address, naming as many folders as needed to get to the site you are working on.
 - ▶ Check “Enable Cache”
 - ▶ Click “Ok”
- ▶ This will set up the Files menu and allow Dreamweaver to keep your links working correctly, even if you move and/or rename files
- ▶ You can set up remote access as well, but it is hard from UW computers.



1. Make sure you have selected right folder in the Assets menu
2. Create an 'index' html file and a css file. File > New > Basic Page > HTML then repeat for > CSS
3. Open the HTML page then, in the CSS menu, click 'Attach Style Sheet'  
4. Follow the prompt by browsing for the CSS page you just made. DW should add the line of code to your HTML document.
5. Now you are ready to add content and set styles

Creating an HTML page with CSS

Dreamweaver integrates CSS with HTML coding so you can do both at the same time without switching back and forth.

Moreover, it will write the code for you.

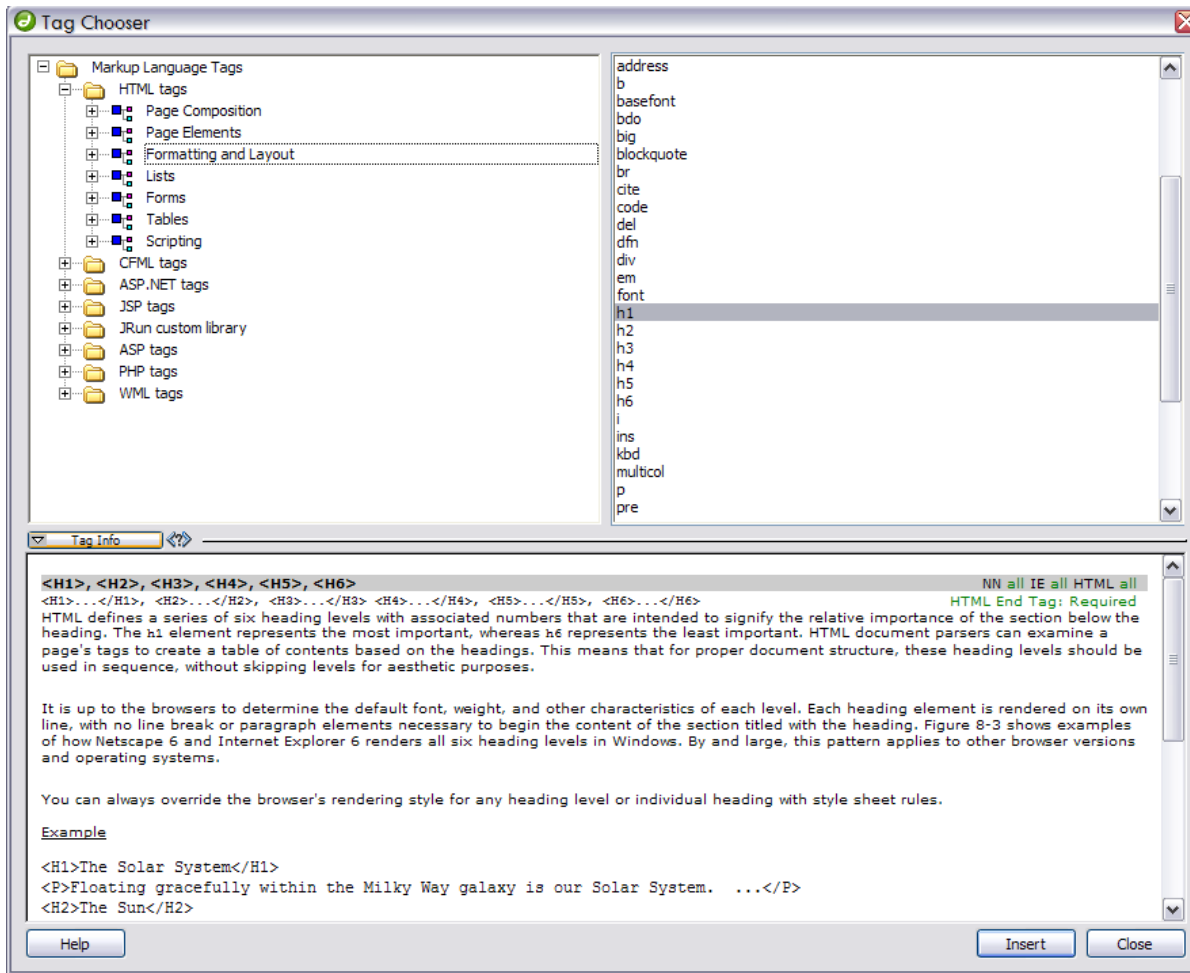
It is a good idea, then, to set up the HTML and CSS at the same time.



Let the Dreamweaver do it

- ▶ There are a lot of ways to enter code. Of course there is just straight writing it out, there is also the ever-dangerous WYSIWYG. However, Dreamweaver offers a bunch of tools to do the coding for you without mucking things up by trying to render graphics as code.
- ▶ This is especially great if you are just learning to code because you won't have to remember all the tags, the specific attributes for each, or the idiosyncrasies of composition. Plus, many of the tag generators include explanations of their use!
- ▶ Most are fairly explanatory and need you only to follow a prompts.
- ▶ Here are a few:





Tag Chooser:

This handy tool will let you pick tags from a list and explain what they do and how they are perceived by the coding community!

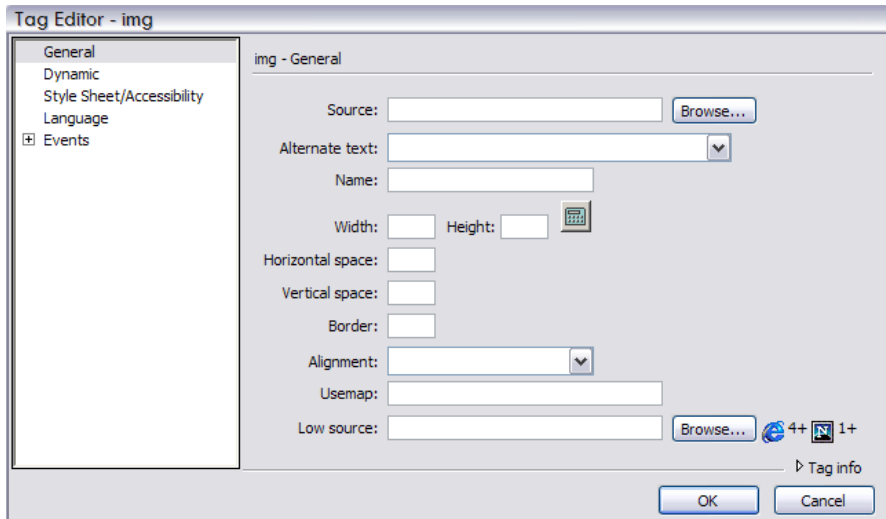
1. Right click in the Code view
2. Select "Insert Tag"
3. Browse the list to find the tag you want. Tags are divided up by type.
4. Clicking once on a tag will bring up a description, an example of how to code with it, recommendation for its use.
5. Double-click to bring up the Tag Editor, which allows you to set Class and ID info for easy styling
6. Once the tag you want is highlighted, click "insert" and the code will appear where the cursor is in the Code Viewer
7. The Tag Chooser will stay open until you close it, allowing you to keep adding tags



Most complex, least complex

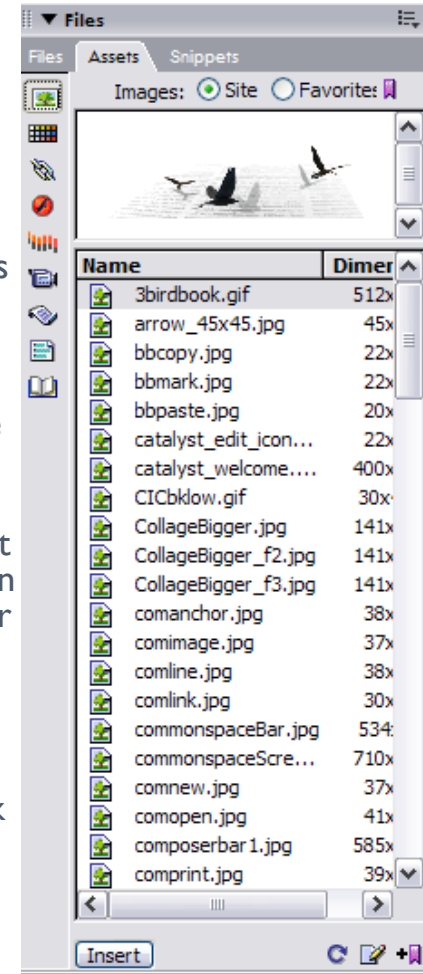
▶ Edit Tag

- ▶ Right-click on the text of any tag, then select “Edit Tag” from the menu.
- ▶ You will get a Tag Editor menu, which provides form entries for every possible attribute for the element you selected. They do not have to be all filled in.
- ▶ While this can be overwhelming, it gives you the greatest amount of control and you won’t have to remember what attributes go with which elements.




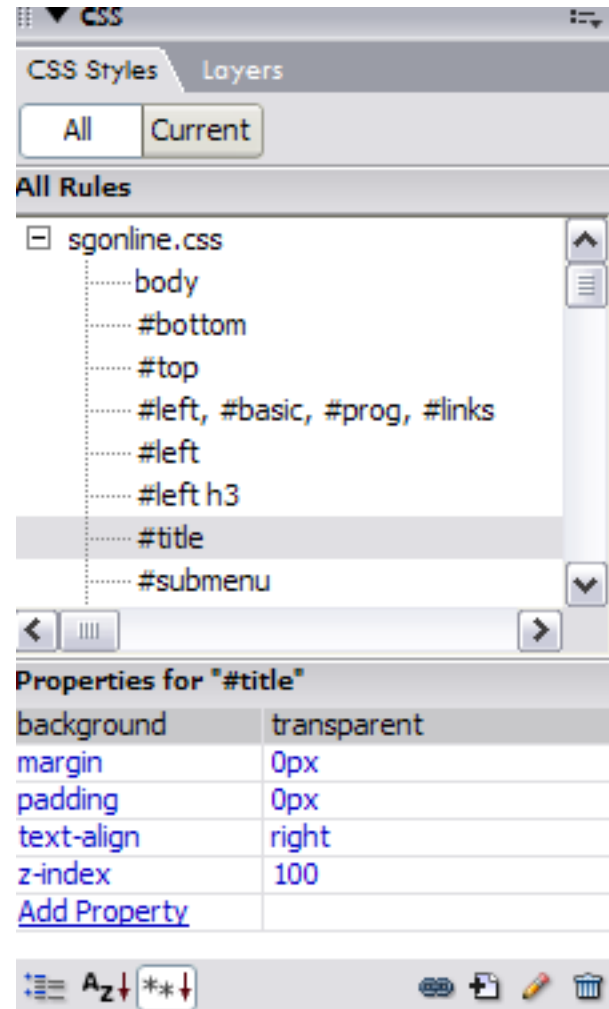
▶ Dragging files into Code view

- ▶ You can use the Tag Chooser or Insert bar to add links, images, videos, etc. But you can also click and drag items from the Files and Assets menus into the Code View field.
- ▶ This allows you to code relative links and insert images really quickly.
- ▶ It will prompt you to set some attributes but then it will write the code for you.
- ▶ These options involves the least amount of effort to get elements into your page; just click and drag.



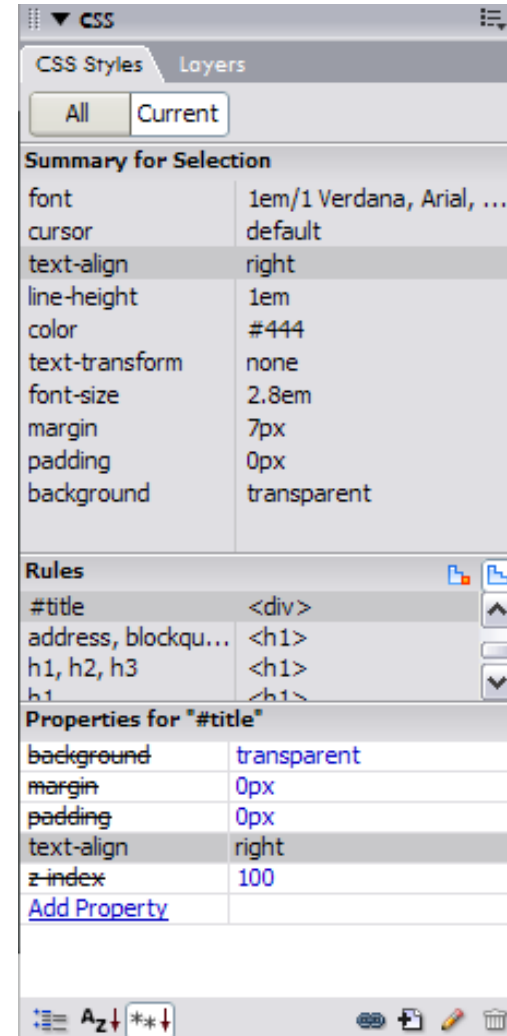
Adding Styles

- ▶ A big benefit of using Dreamweaver is that you can add styles without switching between programs or files.
- ▶ This is done in the CSS menu, which is divided into two parts
 - ▶ On top is a list of the elements defined in the attached CSS page
 - ▶ On the bottom is a list of the properties currently modified
- ▶ To modify styles for a tag in the HTML page you are working on:
 - ▶ Click 'Add New Rule' 
 - ▶ Select how general or specific you want your rule to be, Class (any tag), Tag (all instances of the element you name), or Advance (IDs or a specific occurrence of a tag)
 - ▶ Enter the tag in question in the "Selector" field and click 'Ok'
 - ▶ DW will now offer the opportunity to set all characteristics that apply. Enter data where you find it necessary and Click Ok
 - ▶ DW will then enter the code into the attached CSS page and it will appear in the CSS Menu



Coping with Cascading

- ▶ Because rules apply in a cascading fashion, sometimes not all the styles for a specific element will be set by attributes of earlier elements.
- ▶ DW will help you see how that cascading falls with the CSS menu.
 - ▶ Click on an element in the CSS Menu
 - ▶ Select “current” rather than “All” to see only the styles that apply to the highlighted element
 - ▶ DW will show all the properties modified across the style sheet for this element
 - ▶ Highlight one of the properties and DW will show all the instances that modify this element (“Rules”) as well as offer you a chance to change the rules (“Properties for...”)



Finally...

- ▶ Once you have finished writing your web pages and adding styles, you will still need to publish it to the web.
- ▶ The steps for this are the same as with other composers.
 - ▶ Make sure your web capabilities are activated
 - ▶ Connect to your web space via the SSH File Transfer
 - ▶ Move all the folders and files you just made to your “student_html” folder.
 - ▶ You are all done!
- ▶ What we saw today are just some of Dreamweaver's functionality. We seen, however, its basic set up, which should allow you to play around with other menus and utilities. Explore and see what other time savers it can offer.

