

Contents

- Homework 0: Interpolation examples – R. J. LeVeque
- Sample problem
- Interpolation data:
- Using monomials
- Lagrange form
- Chebfun examples

Homework 0: Interpolation examples – R. J. LeVeque

This is a demonstration of using Matlab publish to combine code with descriptions.

Sample problem

```
% <latex>
% Determine the quadratic polynomial  $p(x)$  that interpolates the data
% \[
% (-1,3), (0,-1), (1,2)
% \]
% first using the Vandermonde matrix and then using the Lagrange form of
% interpolating polynomial.
% </latex>
```

Interpolation data:

```
xj = [-1.; 0.; 1.]
yj = [3.; -1.; 2.]
```

```
xj =
    -1
     0
     1
yj =
     3
    -1
     2
```

Using monomials

For a quadratic interpolation we use basis functions 1, x , and x^2 .

Define Vandermonde matrix: The columns are the basis functions evaluated at the interpolation points.

$$A = [x_j.^0, x_j, x_j.^2]$$

$$A = \begin{bmatrix} 1 & -1 & 1 \\ 1 & 0 & 0 \\ 1 & 1 & 1 \end{bmatrix}$$

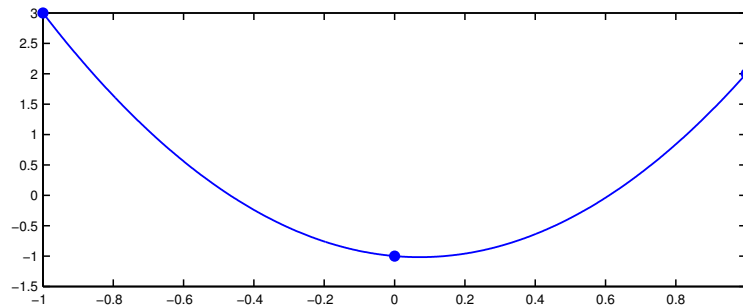
Solve the system for the monomial coefficients:

$$c = A \setminus y_j$$

$$c = \begin{bmatrix} -1.0000000000000000 \\ -0.5000000000000000 \\ 3.5000000000000000 \end{bmatrix}$$

plot the resulting polynomial on a fine grid:

```
x = linspace(-1, 1, 1001);  
p = c(1) + c(2)*x + c(3)*x.^2;  
plot(x,p)  
hold on  
plot(xj,yj,'.', 'markersize',20)
```



Lagrange form

Evaluate the Lagrange basis functions on the fine grid for plotting: Recall that the Lagrange polynomials are:

$$L_1(x) = \frac{(x - x_2)(x - x_3)}{(x_1 - x_2)(x_1 - x_3)}, \quad L_2(x) = \frac{(x - x_1)(x - x_3)}{(x_2 - x_1)(x_2 - x_3)}, \quad L_3(x) = \frac{(x - x_1)(x - x_2)}{(x_3 - x_1)(x_3 - x_2)},$$

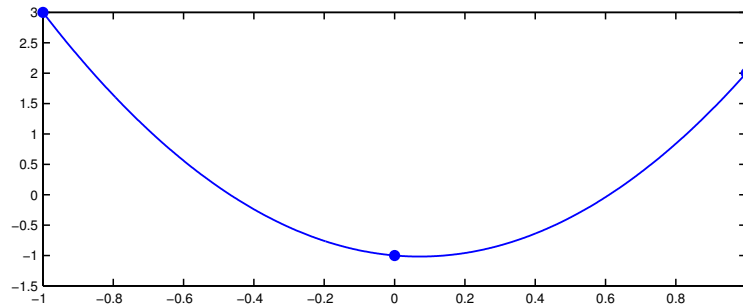
```
L1 = (x-xj(2)).*(x-xj(3)) / ((xj(1)-xj(2))*(xj(1)-xj(3)));  
L2 = (x-xj(1)).*(x-xj(3)) / ((xj(2)-xj(1))*(xj(2)-xj(3)));  
L3 = (x-xj(1)).*(x-xj(2)) / ((xj(3)-xj(1))*(xj(3)-xj(2)));
```

In this form, the data values are the coefficients

```
p = yj(1)*L1 + yj(2)*L2 + yj(3)*L3;
```

Plot the solution

```
clf  
plot(x,p)  
hold on  
plot(xj,yj,'.', 'markersize',20)
```



Chebfun examples

Use Chebfun to plot the function

$$f(x) = \left(\frac{1}{1 + 25x^2} \right)^{10}$$

and the function

$$g(x) = 5 \int_0^x f(s) ds.$$

What degree polynomial approximation is used for each?

```
x = chebfun('x');
f = (1./(1+25*x.^2)).^10;
g = 5*cumsum(f);
clf
plot(f,'b')
hold on
plot(g,'r')
legend('f','g')

disp(sprintf('The degree of f is %i', length(f)-1))
disp(sprintf('The degree of g is %i', length(g)-1))
```

The degree of f is 272
The degree of g is 215

