



PARTNERING FOR  
SUSTAINABLE CITIES  
THROUGH SCIENCE,  
POLICY, AND  
CITIZEN ACTION

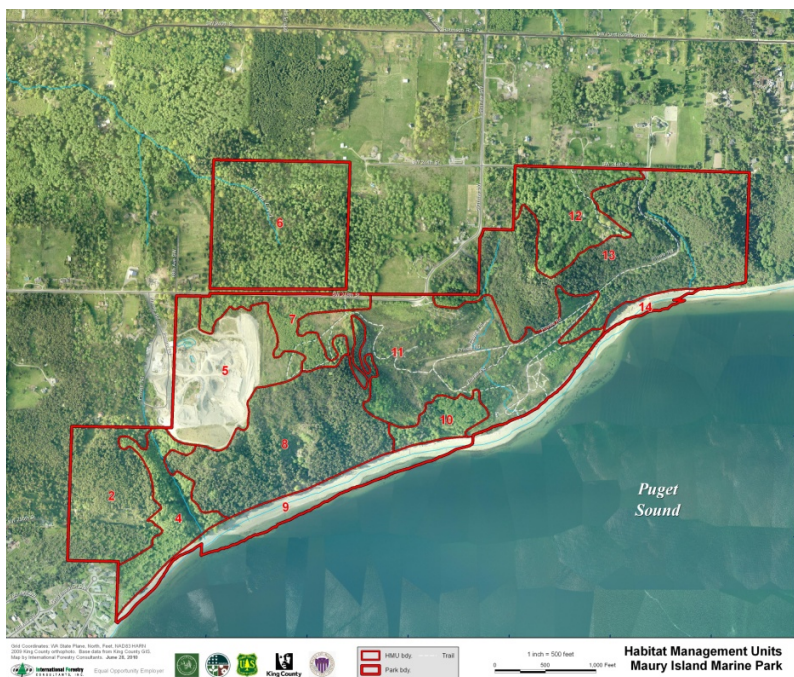


International Forestry  
CONSULTANTS, INC.

USDA Forest  
Service  
Pacific Northwest  
Research  
Station



## Forest Landscape Assessment Tools



### Study Goals

- Conduct forest assessment on over 23,000 acres of King County managed open space forest lands distributed across 150 park sites
- Establish baseline data that describes forest conditions per site and system wide
- Identify key forest conditions that may need corrective and restorative actions
- Develop long term forest stewardship recommendations for King County managers
- Develop rapid forest assessment protocols that can be replicated on other public lands,
- Identify opportunities to collaborate with public & private agencies on forest stewardship

### Study Approach

- Habitat Management Units delineated for each site
- Each HMU characterized by over story and under story species composition including invasive plants and other forest health indicators

### What is the Issue?

King County, like many local jurisdictions, has strategically acquired numerous forested parcels through long term open space preservation initiatives. Most of these forest lands were logged, often multiple times, and appropriate reforestation efforts were often not done. Few sites have forest stewardship plans, and most need adequate forest inventory or assessment. The first need for long term forest stewardship that conserves and enhances forest health is to know baseline conditions.

### Why is this Research Important?

King County and other public land managers are tasked with managing healthy forest landscapes. Forested areas of urbanized landscapes provide a wide range of ecosystem services – environmental, social, and economic. Assessment helps demonstrate public value that any parcel or site offers. This project will provide a comprehensive understanding of forest conditions that will inform long term strategic decisions that will have a positive impact on public health. In particular, King County is looking closely at the health of forests and the role they play in carbon sequestration.

### Contact:

**DAVID KIMMETT**, King County: phone 206-263-7159 email: david.kimmett@kingcounty.gov  
**ARA ERICKSON**, Cascade Land Conservancy: phone 206-9056923 email: area@cascadeland.org



### Research Sponsors



May 2011