

# Geographic variation in cranial morphology of narwhals (*Monodon monoceros*) from Greenland and the eastern Canadian Arctic

Øystein Wiig · Mads Peter Heide-Jørgensen ·  
Kristin L. Laidre · Eva Garde · Randall R. Reeves

Received: 12 October 2010/Revised: 30 April 2011/Accepted: 17 May 2011/Published online: 4 June 2011  
© The Author(s) 2011. This article is published with open access at Springerlink.com

**Abstract** We analyzed variation in nine non-metric and eight metric variables in the skulls of 132 narwhals (*Monodon monoceros*) from five localities in Greenland (Inglefield Bredning, Melville Bay, Uummannaq, Disko Bay, and Scoresby Sound) and one in the eastern Canadian Arctic (Eclipse Sound). Metric variables were used to compare the combined Disko Bay and Uummannaq samples with the samples from Inglefield Bredning and Scoresby Sound using three different multivariate techniques for each sex. None of the results were significant. Seven of the non-metric variables were independent of age and sex and were used in comparing samples from the six localities. No differences were found among the four localities in West Greenland, but differences were found in two of the non-metric variables between the combined West Greenland sample and the one from Scoresby Sound. A major shortcoming of the analysis based on metric data

was the small sample size from several of the areas, which resulted in low statistical power. Genetic as well as environmental factors could explain the differences detected here between narwhals living along the west and the east coasts of Greenland.

**Keywords** Narwhal · *Monodon monoceros* · Geographic variation · Greenland · Eastern Canada

## Introduction

Narwhals (*Monodon monoceros*) occur year-round north of 60°N in the eastern Canadian Arctic and around West and East Greenland, Svalbard, and Franz Josef Land (Laidre et al. 2008). In summer, narwhals spend approximately two months in ice-free bays and fjords of the High Arctic and northern Hudson Bay (including Repulse Bay), and they overwinter offshore in deep, ice-covered habitats along the continental slope (Heide-Jørgensen and Dietz 1995). Several populations undertake extensive annual migrations (Innes et al. 2002; Heide-Jørgensen et al. 2002, 2003; Dietz et al. 2008). Narwhals from Canada and West Greenland have strong site fidelity to the winter pack ice of Davis Strait and Baffin Bay, occurring mainly in areas along the continental slope with high gradients in bottom temperature, predictable but sparse amounts of open water (<5%), and relatively high densities of Greenland halibut (*Reinhardtius hippoglossoides*) (Laidre et al. 2004). It is not known where narwhals from some summering areas (e.g., northern Hudson Bay, East Greenland, and Svalbard) spend the winter. Sightings in the Greenland Sea suggest this is an important wintering area for narwhals from East Greenland and/or Svalbard (Gjertz 1991; Dietz et al. 1994), and some narwhals, presumably from Repulse Bay and

---

Ø. Wiig (✉)

National Center for Biosystematics, Natural History Museum,  
University of Oslo, POB 1172 Blindern, 0318 Oslo, Norway  
e-mail: oystein.wiig@nhm.uio.no

M. P. Heide-Jørgensen · K. L. Laidre  
Greenland Institute of Natural Resources,  
POB 570, 3900 Nuuk, Greenland

K. L. Laidre  
Polar Science Center, University of Washington,  
Seattle, WA, USA

E. Garde  
Center for GeoGenetics, University of Copenhagen,  
Øster Voldgade 5-7, 1350 Copenhagen K, Denmark

R. R. Reeves  
Okapi Wildlife Associates,  
27 Chandler Lane, Hudson, QC J0P 1H0, Canada

northern Hudson Bay, winter in eastern Hudson Strait (Richard 1991).

Narwhals winter in northern and central Baffin Bay and off central West Greenland, and they occur in large numbers off Uummannaq in November. The summer range of these narwhals includes coastal waters of the Canadian Arctic Archipelago and northwestern Greenland. Main summering areas in Canada are Peel Sound, Prince Regent Inlet, Admiralty Inlet, and the Eclipse Sound area (Richard et al. 2010). The main summering areas of West Greenland are Melville Bay and Inglefield Bredning and those of East Greenland are Scoresby Sound and the Ammassalik area (Heide-Jørgensen et al. 2010). Narwhals that summer in northern Hudson Bay and Repulse Bay are assumed not to be part of the Baffin Bay population (Richard 1991).

Dizon et al. (1992) suggested that stocks should be delineated on the basis of information on distribution and movements as well as population responses, genotypic differences, and phenotypic differences. The advantage of using life history and morphological traits in studies of population structure is that these are often related to fitness and respond to selection and thus may reveal differentiation not evident in neutral genetic markers (Swain et al. 2005).

Satellite tracking of narwhals has been used to help define stocks and to examine the meta-population structure of several small subpopulations that showed high fidelity to certain summering grounds (Heide-Jørgensen et al. 2003). Narwhals tagged and tracked from three summer aggregations in West Greenland and the eastern Canadian High Arctic generally remained within those isolated aggregations through the summer and then moved to specific wintering areas. Narwhals tagged in Melville Bay and Eclipse Sound moved to a common wintering ground in the middle of northern Davis Strait, while narwhals tagged near Somerset Island moved to a distinct area in southern Baffin Bay (Dietz et al. 2008). The narwhals made only local movements on their wintering grounds (Laidre et al. 2004), and the tracking results from two individuals over 14 months showed them to return to the same summering areas where they had been tagged (Heide-Jørgensen et al. 2003). Narwhals from Eclipse Sound visited several East Baffin fjords during their fall migration, within the range of hunters from East Baffin communities. Some exchange of narwhals between Canada and West Greenland seems to occur. For example, a male from Admiralty Inlet visited Disko Bay in 2006 (NAMMCO 2009), and a female from Uummannaq visited the Somerset Island area in 2009 (Heide-Jørgensen et al. unpublished).

Dietz et al. (2004) studied the patterns of heavy metals, organochlorines, and stable isotopes in narwhal tissue samples from West Greenland and found some evidence of differences between localities but also evidence of inter-annual differences at the same locality. Those results could not be used to differentiate stocks.

Results of a genetic study of mitochondrial DNA showed that narwhals have very low genetic diversity, which makes stock differentiation from genetics alone problematic although stocks in East and West Greenland can be differentiated (Palsbøll et al. 1997). High Arctic narwhals appeared genetically distinct from narwhals in Repulse Bay, and narwhals from Grise Fiord were weakly differentiated from animals elsewhere in Canada (de March et al. 2003).

Hunters have reported that they observe differences in the physical appearance of narwhals, possibly indicative of stocks (Remnant and Thomas 1992; Thomsen 1993; NAMMCO 2005). Phenotypic differences between groups in the wild may reflect genetic differentiation, environmental differences, or a combination of the two (Thompson 1991). Geographic variation in morphology has been used in many studies to define populations, stocks, or subspecies of cetaceans (e.g., Perrin 1975; Christensen et al. 1990; Amano and Miyazaki 1992; Mikkelsen and Lund 1994; Perrin et al. 1994; Westgate 2007). The purpose of this study was to examine geographic variation in cranial morphology of narwhals from Baffin Bay and East Greenland and to determine whether there was sufficient variation to inform discussions of stock structure.

## Materials and methods

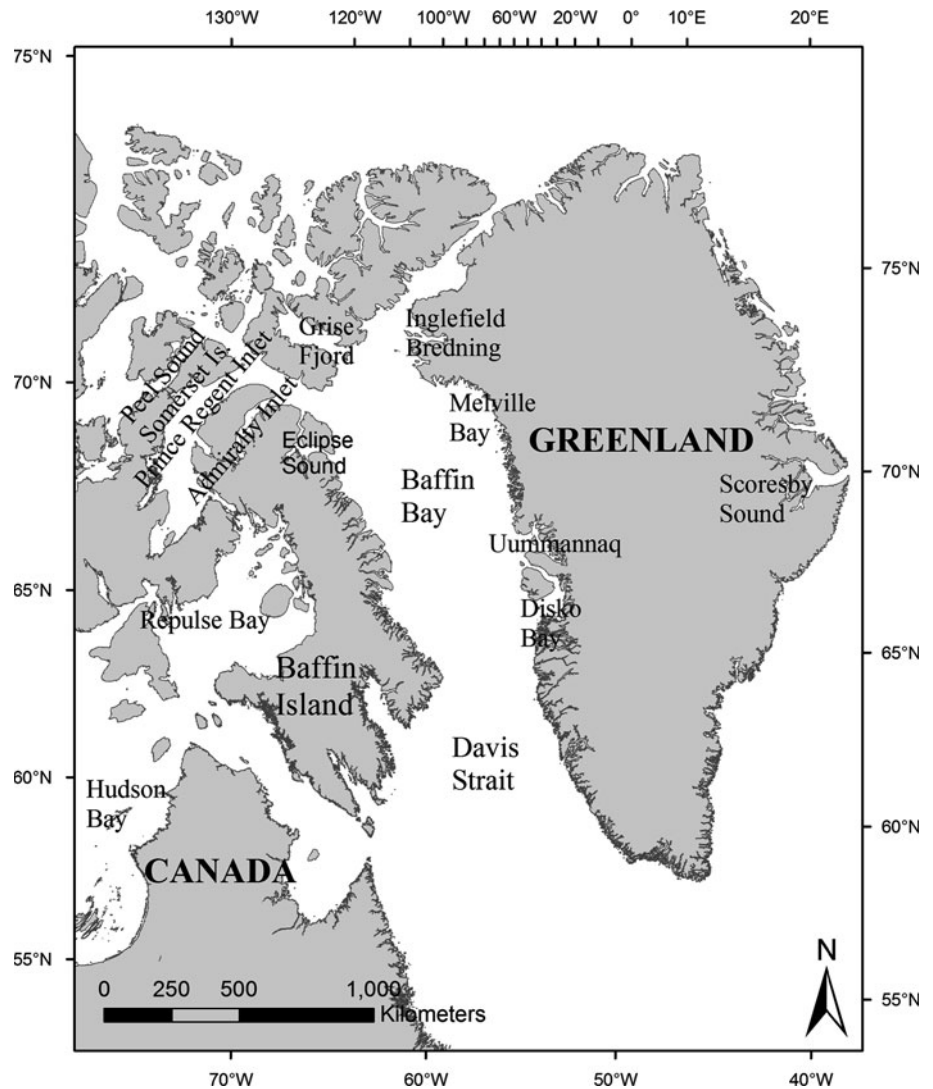
### Skulls

We used 152 narwhal skulls collected from Eclipse Sound in Canada, Inglefield Bredning, Uummannaq and Disko Bay in West Greenland, and Scoresby Sound in East Greenland (Fig. 1). The skulls were collected between the 1800s and 2006, mostly from the Inuit subsistence hunt (ten skulls from Eclipse Sound were from scientific collections; Mansfield et al. 1975). Ninety-four (62%) of the skulls were collected within the last 20 years. Several of the skulls had unknown collection dates.

The occurrence of a single spiraling tusk that emerges from the left side of the upper jaw is a characteristic feature of the narwhal (Reeves and Tracey 1980). This tusk is a male sexual trait, although females sometimes have it. Individuals are occasionally 'double-tusked', with tusks growing from both sides of the jaw. Even more rarely, the tusk grows only on the right side.

We initially used the presence/absence of a tusk to determine the sexes of the skulls. Any skull with the left part of the rostrum destroyed and recorded as a male was assumed to be a male. The sexes of 23 of the skulls from Scoresby Sound were also confirmed by DNA analyses (Palsbøll et al. 1997). The sexes of 42 skulls from all areas in West Greenland and Canada were further confirmed

**Fig. 1** Localities related to narwhal (*Monodon monoceros*) distribution in Greenland and the eastern Canadian Arctic



from sex organs. Overall, the sample size consisted of 79 males and 73 females (Table 1). One male without tusks identified from two testes was caught in Uummannaq in 1993.

**Table 1** Number of skulls of narwhals (*Monodon monoceros*) from localities in eastern Canada and Greenland used in the analyses

Locality	Males	Females	Total
Eclipse Sound	6	11	16
Inglefield Bredning	20	19	39
Melville Bay	6	7	13
Uummannaq	13	9	21
Disko Bay	8	7	15
Scoresby Sound	26	20	45
Total	79	73	152

Inglefield Bredning, Melville Bay, Uummannaq, and Disko Bay constitute a West Greenland sample

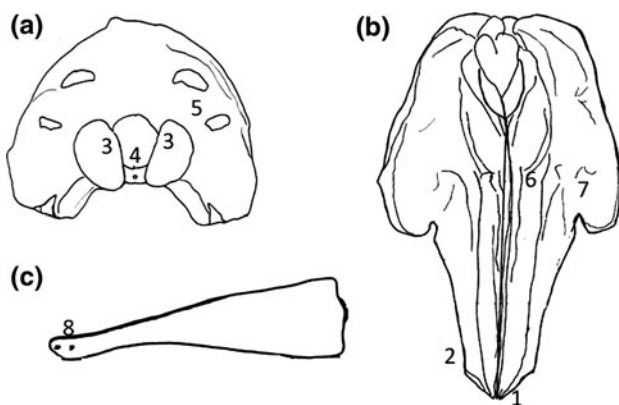
The ages of the skulls were not known. Several skulls were partly destroyed from bullet wounds during the harvest or when the tusk had been removed from the maxillary bone. All variables used in the analyses could therefore not be scored on all skulls. The skulls are located at the Zoological Museum, Copenhagen; Natural History Museum, University of Oslo; and Museum of Nature, Ottawa.

Non-metric variables

A set of eight non-metric variables (NMV) was scored on each skull. Five of the same variables had been used by other investigators (Perrin et al. 1994; Mikkelsen and Lund 1994; Gao and Gaskin 1996), but three (NMV 1, 2, and 3) were defined specifically for this study. Bilateral variables were scored on the left side. If the left side was missing, it was scored at the right side, if possible. The eight non-metric variables are defined in Table 2 (Fig. 2).

**Table 2** Non-metric variables scored in skulls of narwhals (*Monodon monoceros*) from localities in eastern Canada and Greenland

Non-metric variable	Description
1	Number of alveoli in front of the premaxilla. Bilateral variable. Coded: 1 = 0 and 1 alveoli; 2 = 2 alveoli
2	Lateral opening in the maxilla into the embedded tooth, scored at the right side. Could be absent or present. Coded: 0 = absent; 1 = present
3	Occipital condyle overgrown. Posterior margin of the condyles extended medially. Unilateral variable. Could be absent or present. Coded: 0 = absent; 1 = present
4	Small foramen between occipital condyles in basioccipital. Character no. 13 in Perrin et al. (1994). Unilateral variable. Could be absent or present. Coded: 0 = absent; 1 = present
5	Number of fenestra in the occipital region. Variable no. 39 in Mikkelsen and Lund (1994). Bilateral variable. Coded: 1 = 0 or 1 fenestra; 2 = 2–4 fenestra
6	Number of foramina in the premaxillae behind the antorbital notches. Variable no. 3 in Gao and Gaskin (1996). Bilateral variable. Coded: 1 = 0 or 1 foramen; 2 = 2–4 foramina
7	Number of foramina in the maxillae behind the antorbital notches. Variable no. 45 in Mikkelsen and Lund (1994). Coded: 1 = 2–5 foramina; 2 = 6–8 foramina
8	Number of foramina in anterior part of the mandible. Variable no. 43 in Mikkelsen and Lund (1994). Coded: 1 = 1 or 2 foramina; 2 = 3 or 4 foramina

**Fig. 2** Rear (a), dorsal (b), and lateral (c) views of the narwhal skull with metric variables indicated

### Metric variables

Thirty-two metric variables (MV) were measured to the nearest 0.1 mm on all available skulls according to Perrin (1975) and Mikkelsen and Lund (1994). Bilateral variables were measured on both sides of the skull. Because many of the skulls were damaged, it was not possible to measure all variables on all skulls. In the analyses, we used the left side for all comparisons; however, in cases where the left side was missing, we used measures from the right side. We made provisional analyses with eight, 12, and 15 metric variables but selected eight variables for the final analysis in order to keep the number of variables lower than the sample size in each cell (Tabachnick and Fidell 2007), to maximize the number of skulls with all variables present, and to minimize the number of estimated values (see below) for each skull. The eight metric variables are defined in Table 3 (Fig. 3).

### Statistical methods

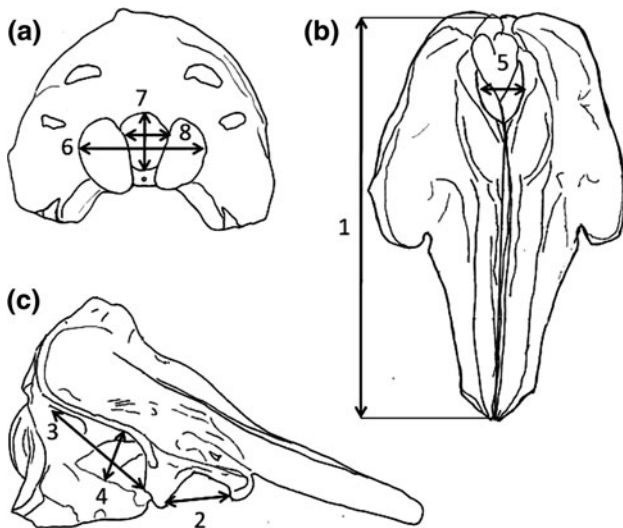
Most non-metric variables are independent of the size of the skull and sex of the animal. However, we tested this assumption given that the variables were being applied to a new species (Wiig and Andersen 1988). The relationship between the non-metric variables and the size of the narwhal skull was tested by Kendall's correlation and separating the sexes. We selected condylobasal length (MV1) to represent the size of the skull. The variables were coded as absent or present and tested for sex dependence. Sexes were pooled for non-metric variables independent of sex and used for analyzing geographic variation.

Sexes were kept separate in analyses of metric variables because male narwhals are generally larger than females (Garde et al. 2007). As a result, sample sizes from only two areas (Inglefield Bredning and Scoresby Sound) were large enough to be included in the analyses. Based on NAMCO (2009), we pooled the samples from Uummannaq and Disko Bay so that sample sizes were large enough to compare three regions of Greenland in the analyses of metric variables. However, it must be noted that the relationships between narwhals caught in winter in Disko Bay and the summer aggregations in Canada and Greenland are unresolved. In order to maximize sample sizes of complete skulls, we estimated missing values for specimens with one to three missing values by the Expectation Maximization (EM) technique recommended by Tabachnick and Fidell (2007) for data missing at random. There was no way to age individual skulls, so removal of juveniles (i.e., individuals not yet fully grown) from the analysis was not possible. Rostral fusion has been suggested as a criterion for cranial maturity in dolphins, but this criterion can give misleading results (Perrin and Heyning 1993). We used the

**Table 3** Metric variables scored in skulls of narwhals (*Monodon monoceros*) from localities in eastern Canada and Greenland

Metric variable	Description
1	Condylbasal length (Perrin 1975)
2	Distance between antorbital processes (Mikkelsen and Lund 1994)
3	Length of post-temporal fossa (Perrin 1975)
4	Height of post-temporal fossa (Perrin 1975)
5	Maximum width between external nares (Perrin 1975)
6	Maximum width of occipital condyles (Mikkelsen and Lund 1994)
7	Maximum height of foramen magnum (Mikkelsen and Lund 1994)
8	Maximum width of foramen magnum (Mikkelsen and Lund 1994)

The variables have previously been described in the references indicated



**Fig. 3** Rear (a), dorsal (b), and lateral (c) views of the narwhal skull and mandible with position of non-metric variables indicated

distribution of condylbasal length and excluded small individuals that were more than 1.5 quartiles away from the 25th percentile, according to the definition of extreme values in SPSS (Pallant 2001). Condylbasal length has been used in other studies to help assess physical maturity (e.g., Westgate 2007).

We pooled the sexes and used a two-way multivariate analysis (MANOVA) to compare sexes and areas based on log-transformed data. In order to reduce the effect of possible age-related size variation, we first applied a multivariate analysis of covariance (MANCOVA) with condylbasal length as a covariate. Condylbasal length was selected because it is a variable that expresses the

general size of the skull and because it was also used to assess the maturity of the skulls. Second, we used a multiple-group principal component analysis based on log-transformed data to discriminate between size and size-free axes (Wiig 1989). We then used a MANOVA to test differences between sexes and areas in a size-free space.

All statistical analyses were performed by SPSS (ver. 16.0) (SPSS Inc., Chicago, Illinois). Level of significance was generally set at  $P \leq 0.05$ , except for tests of equality of covariance matrix across groups by Box's  $M$ , where level of significance was set at  $P \leq 0.001$  (see Tabachnick and Fidell 2007). When several tests were performed on the same dataset of non-metric variables, we used Bonferroni correction of level of significance (alpha) that at the outset was set at  $P < 0.05$ . We used seven or eight variables in these tests so that level of significance was  $P \leq 0.05/7 = 0.007$  or  $P \leq 0.05/8 = 0.006$ .

## Results

### Non-metric variables

The occurrence of NMV 2 (Opening into the embedded tooth) was negatively related to the size of the skull (Males:  $R = -0.40$ ,  $n = 51$ ,  $P < 0.006$ ; Females:  $R = -0.32$ ,  $n = 54$ ,  $P < 0.006$ ), and the variable was not used further in the study. The other seven variables (NMV 1, 3–8) were not related to the size of the skull ( $P > 0.006$ ) and were used to assess geographic variation. The distribution of the variables was not different between the sexes ( $\chi^2 < 3.84$ ,  $df 1$ ,  $P > 0.007$ ). Data from both sexes were accordingly pooled in further analyses.

We first tested whether there was any difference between Eclipse Sound in Canada and the four areas in West Greenland, but no variable had significantly different distribution between these areas ( $P > 0.007$ , Table 4). We then compared the four West Greenland samples and found no differences ( $P > 0.007$ , Table 5). Two of the variables (NMV 1 and NMV 3) had significantly different distributions between the combined West Greenland sample and the sample from East Greenland (Scoresby Sound) (Table 5).

### Metric variables

Data from 10 males and 10 females were removed from further analyses either because they had more than three missing values or because they were extremely small. The resulting dataset consisted of 57 males and 45 females. There was no time trend in size of skulls assessed by regressing condylbasal length against year of capture (Males:  $F = 0.21$ ,  $df 1, 45$ ,  $P > 0.05$ ; Females:  $F = 0.30$ ,

**Table 4** Test of difference in distribution of seven non-metric variables in skulls of narwhals (*Monodon monoceros*) from Eclipse Sound in eastern Canada and Inglefield Bredning, Uummannaq, and Disko Bay in West Greenland

Non-metric variable	Eclipse Sound–Inglefield Bredning			Eclipse Sound–Melville Bay			Eclipse Sound–Uummannaq			Eclipse Sound–Disko Bay		
	<i>n</i>	$\chi^2$	<i>P</i>	<i>n</i>	$\chi^2$	<i>P</i>	<i>n</i>	$\chi^2$	<i>P</i>	<i>n</i>	$\chi^2$	<i>P</i>
1	48	FE	0.026	28	FE	1.00	32	FE	0.645	25	FE	0.250
3	54	0.85	0.386	29	FE	0.025	33	0.86	0.481	26	FE	0.228
4	55	FE	0.344	29	FE	0.023	35	FE	0.264	27	FE	0.102
5	47	FE	0.457	29	FE	1.00	29	FE	0.488	21	FE	1.00
6	27	FE	0.121	28	FE	0.705	32	0.40	0.712	18	FE	0.559
7	26	FE	0.043	29	FE	0.688	34	FE	0.092	19	FE	0.036
8	40	0.44	0.740	24	FE	1.00	28	0.58	0.704	28	FE	0.276

*N* is total sample size,  $\chi^2$  is chi-square statistics, and *P* is the estimated probability. FE denotes the probability estimated from Fisher's exact test, which was used when sample size was less than five in any of the cells. Degrees of freedom were one in all tests. The tests are significant when  $P \leq 0.007$

**Table 5** Test of difference in distribution of seven non-metric variables in skulls of narwhals (*Monodon monoceros*) from Inglefield Bredning, Uummannaq, and Disko Bay combined as a West Greenland sample, and Scoresby Sound in East Greenland

Non-metric variable	West Greenland <sup>a</sup>			West Greenland vs. Scoresby Sound <sup>b</sup>		
	<i>n</i>	$\chi^2$	<i>P</i>	<i>n</i>	$\chi^2$	<i>P</i>
1	73	6.25	0.100	107	9.58	0.002
3	78	4.76	0.216	122	7.32	0.007
4	79	4.04	0.258	124	2.40	0.121
5	62	5.61	0.132	95	3.70	0.054
6	45	7.68	0.053	77	0.37	0.542
7	44	4.76	0.188	80	1.82	0.178
8	56	4.27	0.234	95	0.002	0.961

*N* is total sample size,  $\chi^2$  is chi-square statistics, and *P* is the estimated probability. FE denotes the probability estimated from Fisher's exact test, which was used when sample size was less than five in any of the cells. The tests are significant when  $P \leq 0.007$

<sup>a</sup> degrees of freedom = 3

<sup>b</sup> degrees of freedom = 1

*df* 1, 41,  $P > 0.05$ ). Data were missing at random in both sexes (Males:  $\chi^2 = 54.3$ , *df* 50,  $P > 0.05$ ; Females:  $\chi^2 = 67.7$ , *df* 54,  $P > 0.05$ ). The proportion of estimated data was 6.8% in males and 5.8% in females. The distribution of the eight variables in the three areas (Inglefield Bredning, Uummannaq/Disko Bay, and Scoresby Sound) was assessed for normality for each sex by a Kolmogorov–Smirnov test. None of the 24 tests were significant in males or in females. Therefore, we used all variables in further analyses.

The covariance matrix was equal across groups for the pooled dataset (Box's  $M = 302.36$ , *df* 180, 8,593.30,  $P > 0.001$ ). The two-way MANOVA revealed significant differences between the sexes (Wilks'  $\lambda = 0.590$ , *df* 8, 91,  $P < 0.001$ ). There was no significant difference between areas (Wilks'  $\lambda = 0.835$ , *df* 16, 182,  $P = 0.382$ ). The power of the test (the probability of correctly rejecting a hypothesis that is false) was 0.70 using a significance level

of 0.05, and the effect size (Partial eta squared = total variance of independent variables accounted for by dependent variable) was 0.086. However, by using a significance level of 0.10, the estimated power of the test was 0.81.

In the ANCOVA with condylobasal length as a covariate, the covariance matrix was not different across groups (Box's  $M = 220.26$ , *df* 140, 8,728.38,  $P > 0.001$ ). There was no difference between the sexes in multivariate space (Wilks'  $\lambda = 0.880$ , *df* 7, 91,  $P = 0.103$ ). There was also no differences between areas (Wilks'  $\lambda = 0.893$ , *df* 14, 182,  $P = 0.71$ ). The power of these tests was 0.69 and 0.47, respectively, based on a significance level of 0.05, with effect sizes of 0.120 and 0.055, respectively. Using a significance level at 0.10, the power of the tests was 0.79 and 0.61, respectively, confirming differences between sexes as in the ANOVA but still low power for evaluating the difference between areas.

**Table 6** Principal component loadings for the first (PC1) and the second (PC2) principal component of log-transformed variables measured on the skulls of male and female narwhals (*Monodon monoceros*) from Greenland

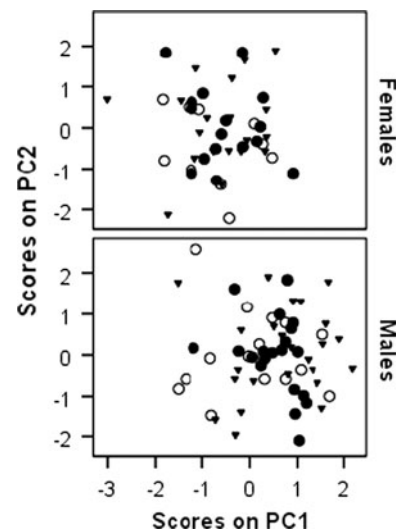
Metric variable	PC1	PC2
1	0.856	0.321
2	0.753	0.481
3	0.767	−0.284
4	0.894	−0.399
5	0.474	0.532
6	0.844	0.265
7	0.460	−0.102
8	0.588	0.250
% of total variation	60.0	13.7

The PCA on log-transformed data revealed positive loadings for all eight variables on the first principal component (PC1) (Table 6), indicating that this is a size component (Wiig 1989). The other components had loadings of variable size and signs and are shape components. PC1 accounts for 60.0% and PC2 accounts for 13.7% of the total variation. We tested the difference between groups on the size component PC1. The error variance across groups was not different (Leven's test:  $F = 1.550$ ,  $df: 1, 98$ ,  $P = 0.181$ ). PC1 showed difference between sexes ( $F = 38.51$ ,  $df 1, 98$ ,  $P < 0.001$ ); females had lower scores than males. There was no difference between areas ( $F = 1.507$ ,  $df 2, 98$ ,  $P = 0.206$ ). The power of this test was, however, low (0.332), and the effect size was 0.032.

The MANOVA on the seven size-free components showed that the covariance matrix was not different across groups (Box's  $M = 225.42$ ,  $df 140, 8,728.38$ ,  $P > 0.001$ ). There was no difference between the sexes in multivariate space (Wilks'  $\lambda = 0.866$ ,  $df 7, 92$ ,  $P = 0.060$ ). There were also no differences between areas (Wilks'  $\lambda = 0.873$ ,  $df 14, 184$ ,  $P = 0.533$ ). The power of these tests was 0.76 and 0.57, respectively, based on a significance level of 0.05. The effect size was 0.134 and 0.066, respectively. Using a significance level of 0.10, the power of the tests increased to 0.849 and 0.700, respectively. Thus, we detected marginal shape differences between sexes but still had too little power to the test for differences between areas. This is very similar to the results of the ANCOVA. The distribution of the skulls on PC1 and PC2 is shown in Fig. 4 and indicates a complete overlap of scores between areas in both sexes.

## Discussion

In general, our results showed no differences in morphology between the skull samples from Eclipse Sound in



**Fig. 4** Scores of males and females on PC1 and PC2 from a principal component analysis of eight metric variables measured on the skull of (*Monodon monoceros*) from Inglefield Bredning (filled circle), Uummannaq/Disko Bay (open circle), and Scoresby Sound (inverted filled triangle) in Greenland

Canada and those from West Greenland, while they showed some differences between West and East Greenland.

The three different analyses of metric variables did not detect morphological differences between narwhals from Inglefield Bredning, Uummannaq/Disko Bay, and Scoresby Sound. The power of the tests was, however, small in relation to the value of 0.80 recommended by Cohen (1988). Power depends on the effect size, the alpha level set by the researcher, and the sample size. The effect size in our analyses of relationships between areas was generally small (0.034–0.087), indicating that area accounted for very little of the variance in the metric variables. By applying an alpha level of 0.10, as suggested by Stevens (1996) for tests with low power, the power increased but the differences between areas were still not significant. This indicates that the present data do not show any detectable difference in metric variation between areas. This is also apparent from the complete overlap of scores of each sex on PC1 and PC2 in Fig. 4.

No differences in distribution of non-metric variables were detected between the sample from Eclipse Sound and any of the samples from West Greenland. According to NAMMCO (2009), narwhals from Eclipse Sound and Melville Bay overwinter in the same area, meaning some genetic exchange may occur between animals from these two summer aggregations. Narwhals from Admiralty Inlet might spend time in Eclipse Sound as well as in Disko Bay (and thus contribute to the samples from hunts in those two areas). Also, narwhals from the summer aggregation in Melville Bay may occur in Disko Bay in the winter and in

Uummannaq in the spring (NAMMCO 2009). These relationships could contribute to the lack of differentiation in distribution of non-metric variables between the Eclipse Sound sample and the combined West Greenland sample as well as the lack of differences among the four samples from West Greenland. Differences among the West Greenland samples were also not found from the metric variables. Two of the seven non-metric variables showed differences between the combined West Greenland sample and the East Greenland sample from Scoresby Sound, whereas such differences could not be detected in the metric variables.

Perrin et al. (1994) compared the resolving power of metric and non-metric cranial variables in a study of geographic variation in common dolphins (*Delphinus* spp.). They concluded that while metric characters had higher discriminating power than non-metric characters, both were useful and efficient. They recommended that non-metric characters be used only in combination with metric characters. Interestingly, in our study, it was the non-metric variables that differed between samples. A major shortcoming in our study, however, was the smallness of sample sizes from all areas, resulting in low statistical power. Sample sizes in studies where skull morphology has been used successfully to distinguish populations have generally been larger, and these studies have used a higher number of variables. Westgate (2007) pointed out that the significance reported in his study was likely the result of large sample sizes that increased the power of the tests. Larger samples of complete (intact) skulls would allow us to use more variables and thereby incorporate a greater proportion of the total morphological variation in the skulls and increase the power of the tests.

The findings from our study using morphology are generally consistent with the results from genetic studies (Palsbøll et al. 1997) and pollution distribution studies (Dietz et al. 2004). Population structure within the Baffin Bay region is difficult to resolve, whereas it seems clear that narwhals from west of Greenland (Baffin Bay region) and east of Greenland are geographically and demographically separate.

Because of the complex interdependence between function and anatomy of the cranium, cranial changes are likely to occur only if differential selective pressures and reproductive isolation are strongly in place (Westgate 2007). However, phenotypic differences between groups in the wild may reflect genetic differentiation, environmental differences, or a combination of the two (Thompson 1991). The studies of Palsbøll et al. (1997) and Dietz et al. (2004) suggest that there are genetic as well as environmental differences between narwhals living west and east of Greenland, which could explain the difference we detected in skull morphology. Movement of narwhals between West

and East Greenland has never been documented, and narwhals in these areas are managed as separate stocks (NAMMCO 2009).

**Acknowledgments** This study was funded by the Greenland Institute of Natural Resources and the Commission for Scientific Research in Greenland. Jette Jensen participated in the skull measurement. Jeppe Møhl and the Zoological Museum of Copenhagen were instrumental in cleaning and organizing the samples at the museum.

**Open Access** This article is distributed under the terms of the Creative Commons Attribution Noncommercial License which permits any noncommercial use, distribution, and reproduction in any medium, provided the original author(s) and source are credited.

## References

- Amano M, Miyazaki N (1992) Geographic variation and sexual dimorphism in the skull of Dall porpoise, *Phocoenoides dalli*. *Mar Mamm Sci* 8:240–261
- Christensen I, Haug T, Wiig Ø (1990) Morphometric comparison of minke whales *Balaenoptera acutorostrata* from different areas of the North Atlantic. *Mar Mamm Sci* 6:327–338
- Cohen J (1988) Statistical power analysis for the behavioral sciences. Erlbaum, Hillsdale
- de March B, Tenkula DA, Postma LD (2003) Molecular genetics of narwhal (*Monodon monoceros*) from Canada and West Greenland (1982–2001). Canada Department of Fisheries and Oceans, Canadian Science Advisory Secretariat Research Document 2003/080
- Dietz R, Heide-Jørgensen MP, Born EW, Glahder CM (1994) Occurrence of narwhals, *Monodon monoceros*, and white whales, *Delphinapterus leucas*, in East Greenland. *Medd Grønl Biosci* 39:69–86
- Dietz R, Riget F, Hobson KA, Heide-Jørgensen MP, Møller P, Cleeman M, de Boer J, Glasius M (2004) Regional and inter annual patterns of heavy metals, organochlorines and stable isotopes in narwhals (*Monodon monoceros*) from West Greenland. *Sci Total Env* 331:83–105
- Dietz R, Heide-Jørgensen MP, Richard P, Orr J, Laidre K, Schmidt HC (2008) Movements of narwhals (*Monodon monoceros*) from admiralty inlet monitored by satellite telemetry. *Polar Biol* 31:1295–1306
- Dizon AE, Lockyer C, Perrin WF, DeMaster DP, Sisson J (1992) Rethinking the stock concept: a phylogeographic approach. *Conserv Biol* 6:24–36
- Gao AL, Gaskin DE (1996) Nonmetric morphometry of the skull of the harbour porpoise, *Phocoena phocoena*, in the western North Atlantic and eastern North Pacific. *Can J Zool* 74:2199–2205
- Garde E, Heide-Jørgensen MP, Hansen SH, Nachman G, Forchhammer MC (2007) Age-specific growth and remarkable longevity in narwhals (*Monodon monoceros*) from West Greenland as estimated by aspartic acid racemization. *J Mammal* 88:49–58
- Gjertz I (1991) The narwhal, *Monodon monoceros*, in the Norwegian high Arctic. *Mar Mamm Sci* 7:402–408
- Heide-Jørgensen MP, Dietz R (1995) Some characteristics of narwhal, *Monodon monoceros*, diving behaviour in Baffin Bay. *Can J Zool* 73:2120–2132
- Heide-Jørgensen MP, Dietz R, Laidre KL, Richard P (2002) Autumn movements, home ranges, and winter density of narwhals (*Monodon monoceros*) tagged in Tremblay Sound, Baffin Island. *Polar Biol* 25:331–341



- Heide-Jørgensen MP, Dietz R, Laidre KL, Richard P, Orr J, Schmidt HC (2003) The migratory behaviour of narwhals (*Monodon monoceros*). *Can J Zool* 81:1298–1305
- Heide-Jørgensen MP, Laidre KL, Burt ML, Borchers DL, Marques TA, Hansen RG, Rasmussen M (2010) Abundance of narwhals (*Monodon monoceros*) on the hunting grounds in Greenland. *J Mammal* 91:1135–1151
- Innes S, Heide-Jørgensen MP, Laake JL, Laidre KL, Cleator HJ, Richard P, Stewart REA (2002) Surveys of belugas and narwhals in the Canadian high Arctic in 1996. *NAMMCO Sci Pub* 4:169–190
- Laidre KL, Heide-Jørgensen MP, Logsdon ML, Hobbs RC, Heagerty P, Dietz R, Jørgensen OA, Treble MA (2004) Seasonal narwhal habitat associations in the high Arctic. *Mar Biol* 145:821–831
- Laidre KL, Stirling I, Lowry LF, Wiig Ø, Heide-Jørgensen MP, Ferguson SH (2008) Quantifying the sensitivity of arctic marine mammals to climate-induced habitat change. *Ecol Appl* 18:S97–S125
- Mansfield AW, Smith TG, Beck B (1975) The narwhal, *Monodon monoceros*, in eastern Canadian waters. *J Fish Res Bd Can* 32:1041–1046
- Mikkelsen AMH, Lund A (1994) Intraspecific variation in the dolphins *Lagenorhynchus albirostris* and *L. acutus* (Mammalia, Cetacea) in metrical and nonmetrical skull characters, with remarks on occurrence. *J Zool* 234:289–299
- NAMMCO (2005) NAMMCO annual report. North Atlantic Marine Mammal Commission, Tromsø
- NAMMCO (2009) NAMMCO annual report. North Atlantic Marine Mammal Commission, Tromsø
- Pallant J (2001) SPSS Survival manual. Open University Press, Maidenhead
- Palsbøll PJ, Heide-Jørgensen MP, Dietz R (1997) Population structure and seasonal movements of narwhals, *Monodon monoceros*, determined from mtDNA analysis. *Heredity* 78:284–292
- Perrin WF (1975) Variation of spotted and spinner porpoise (genus *Stenella*) in the eastern tropical Pacific and Hawaii. *Bull Scripps Inst Oceanogr Univ California San Diego* vol 21, La Jolla, California
- Perrin WF, Heyning JE (1993) Rostral fusion as a criterion of cranial maturity in the common dolphin, *Delphinus delphis*. *Mar Mamm Sci* 9:195–197
- Perrin WF, Yablokov AV, Barlow J, Mina MV (1994) Comparison of the resolving power of metric and non-metric cranial characters in defining geographical populations of dolphins. *Contributions in Science, Natural History Museum of Los Angeles County* 447:1–15
- Reeves RR, Tracey S (1980) *Monodon monoceros*. *Mamm Species* 127:1–7
- Remnant RH, Thomas ML (1992) Inuit traditional knowledge of the distribution and biology of High Arctic narwhal and beluga. Unpublished report by North/South Consultants Inc., Winnipeg
- Richard PR (1991) Abundance and distribution of narwhals (*Monodon monoceros*) in northern Hudson Bay. *Can J Fish Aquat Sci* 48:276–283
- Richard PR, Laake JL, Hobbs RC, Heide-Jørgensen MP, Asselin NC, Cleator H (2010) Baffin Bay narwhal population distribution and numbers: aerial surveys in the Canadian High Arctic, 2002–2004. *Arctic* 63:85–99
- Stevens J (1996) Applied multivariate statistics for social sciences. Erlbaum, Hillsdale
- Swain DP, Hutchings JA, Foote CJ (2005) Environmental and genetic influences on stock identification characters. In: Cadrin SX, Friedland KD, Waldman JR (eds) Stock identification methods. Elsevier Academic Press, Burlington, pp 45–85
- Tabachnick BG, Fidell LS (2007) Using multivariate statistics. Pearson/Allyn and Bacon, Boston
- Thompson JD (1991) Phenotypic plasticity as a component of evolutionary change. *Trends Ecol Evol* 6:246–249
- Thomsen ML (1993) Local knowledge of the distribution and hunting of beluga and narwhal: a survey among Inuit hunters in West and North Greenland. Report for Greenland Hunters' and Fishermen's Association, Greenland home rule authority and Inuit circumpolar conference, Nuuk, Greenland
- Westgate AJ (2007) Geographic variation in cranial morphology of short-beaked common dolphins (*Delphinus delphis*) from the North Atlantic. *J Mammal* 88:678–688
- Wiig Ø (1989) Craniometric variation in Norwegian wolverines *Gulo gulo* L. *Zool J Linn Soc* 95:177–204
- Wiig Ø, Andersen T (1988) Non-metrical variation in the skull of Norwegian lynx. *Acta Theriol* 33:3–19