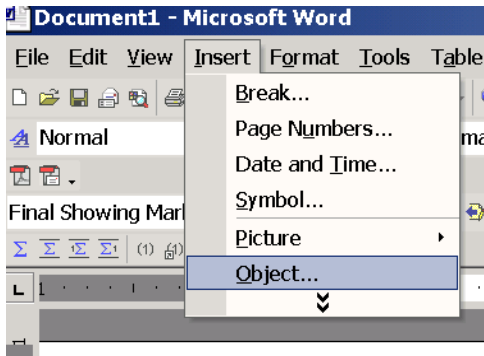


# MathType in Word<sup>1</sup>

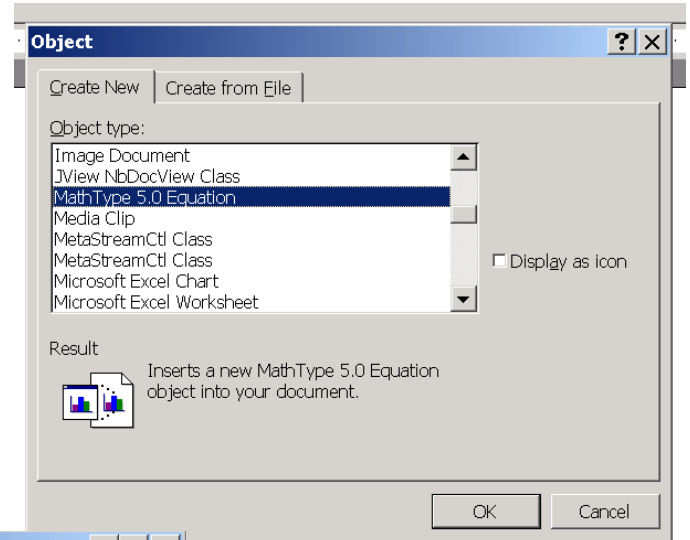
MathType is a software package that makes it easier to insert equations and special characters into documents. There is a site license at UW for the software. UW Sociology students, faculty and staff may contact me ([glynn@u.washington.edu](mailto:glynn@u.washington.edu)), Gillian Murphy ([gmurphy@u.washington.edu](mailto:gmurphy@u.washington.edu)), or send e-mail to [savtech@u.washington.edu](mailto:savtech@u.washington.edu) for assistance. You will find details about the site license at: <http://www.washington.edu/computing/software/sitelicenses/mathtype/>

You may download an evaluation version of the software from <http://www.dessci.com/en/products/mathtype/win/> and then use the UW registration number.

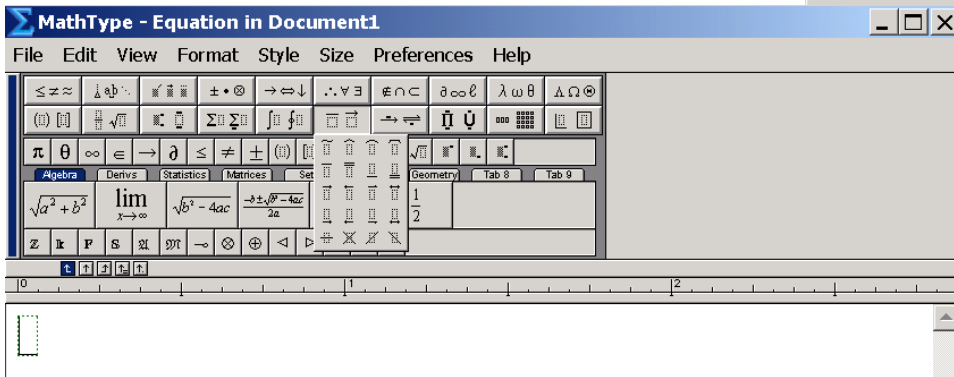
After the MathType software has been installed, within Microsoft Word, go to the Insert menu, and then click on Object.



An Object menu will appear. Find MathType and click OK.

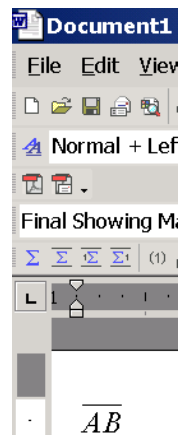
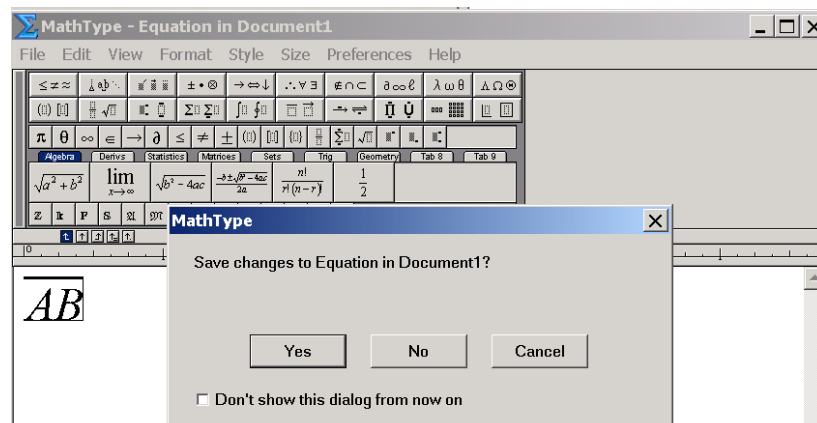


The MathType window will pop up. Each set of icons across the top represent many more icons that are available. Click on any that you need.



Once you have created the characters that you need, click the X on the upper right. A dialogue box will appear asking your you want to same the changes to Equation into your document.

Click Yes, and the characters will be inserted into your Word document.



<sup>1</sup>Prepared by Patty Glynn, University of Washington, January 4, 2003.