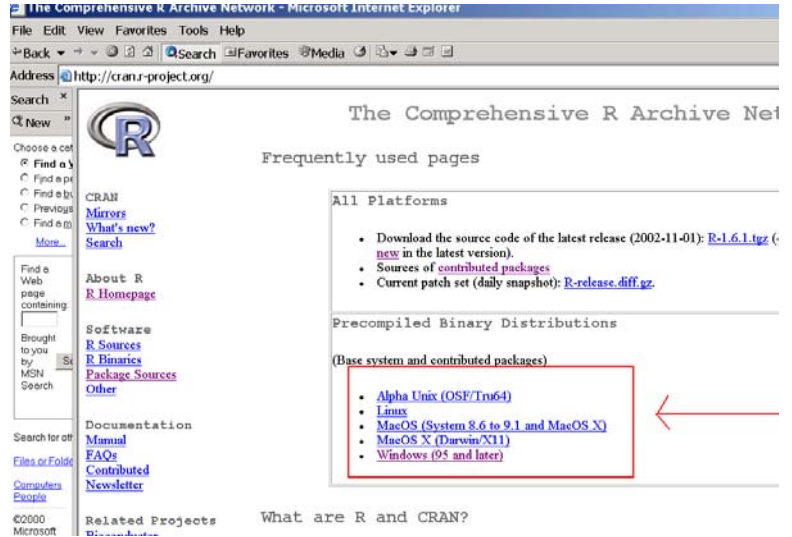


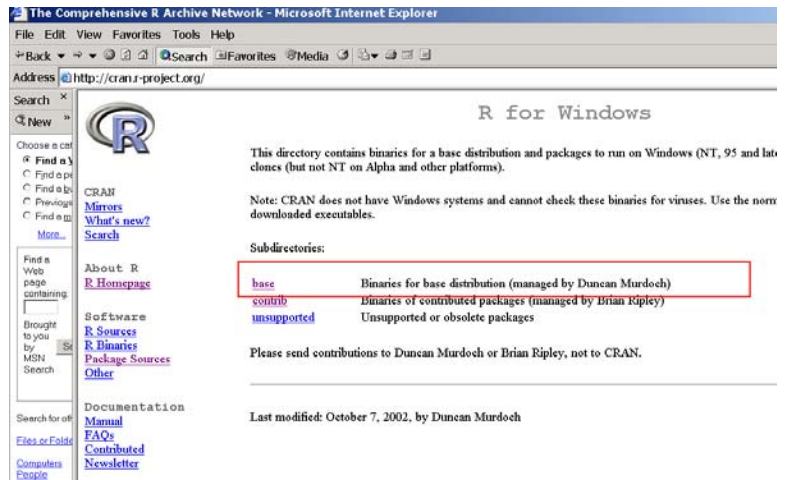
Getting and Updating R¹

You may download and install R from <http://cran.r-project.org/>. Most users will want to go to this location, and then click on “Windows (95 and later)” on the right panel of the page.

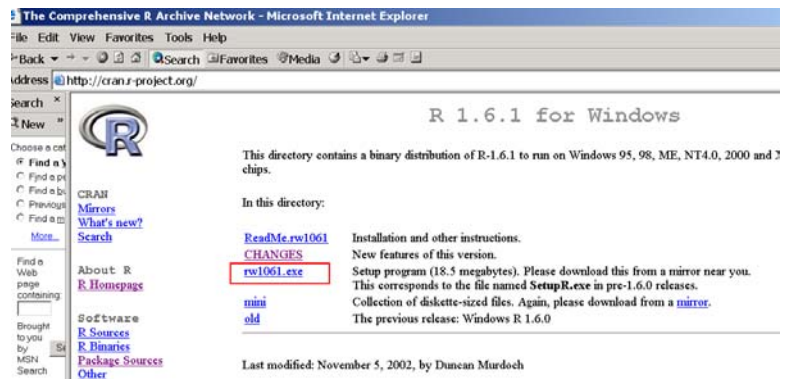
(For some operating systems, administrative privileges are required to install or update the software.)



And then click on [base](#).

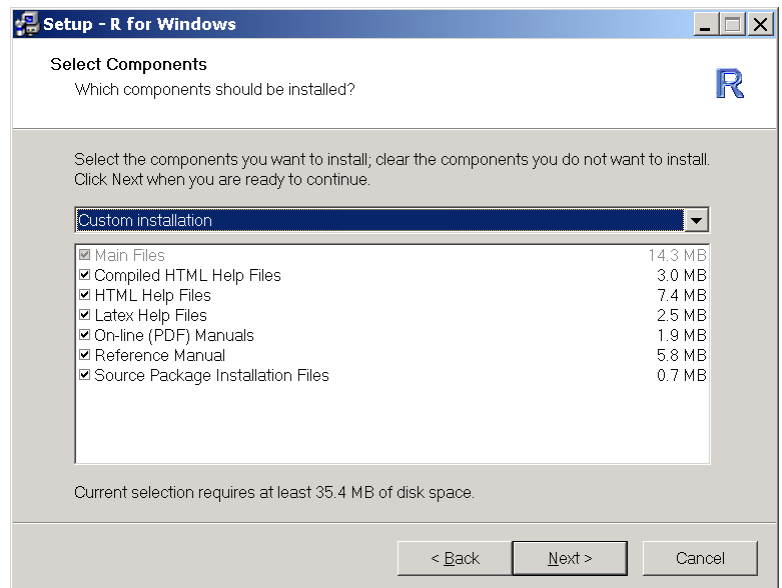


That will bring you to a page that offers you the latest version. Today (November 8, 2002) it is version 1.6.1. Click on the link to the latest version, download it, and install it. Installation of this software requires administrative privileges.



¹Prepared by Patty Glynn, University of Washington. November 15, 2002, updated 12/7/02

If you have a lot of room on your hard disk, I recommend requesting that all of the documentation be installed. It will make getting help easier.



Once you have installed are, it is easy to update by clicking on Packages and then Update packages from CRAN. You must have administrative privileges, and have access to the Internet (be on-line) for this to work.

