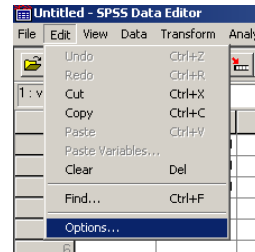
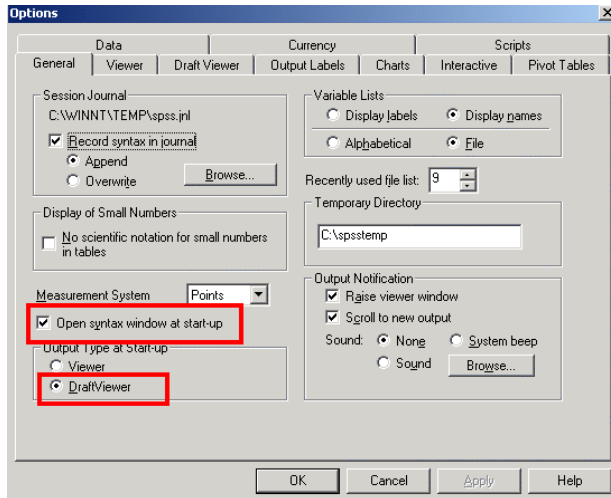


Configuring SPSS for Windows¹

It is possible to alter the configuration of SPSS so that it will give you more information, and give output in a less-pretty, but more usable format. The following will explain how to alter the configuration. I will provide information about the configuration that I prefer.

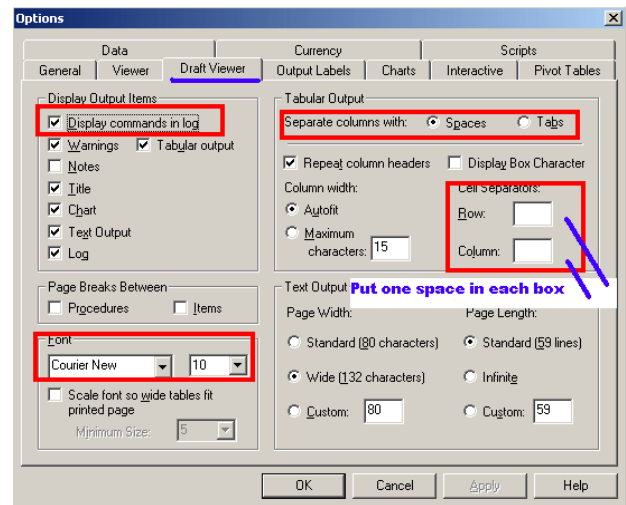
1. From the SPSS Data Editor, click on Edit and Options.
2. The following Options Window will appear.



3. Not that there are tabs for different options. You may alter configurations in each window. I will present a series of pictures below, marking the changes that I like to make. The first changes are on the General Tab, and they are marked above.

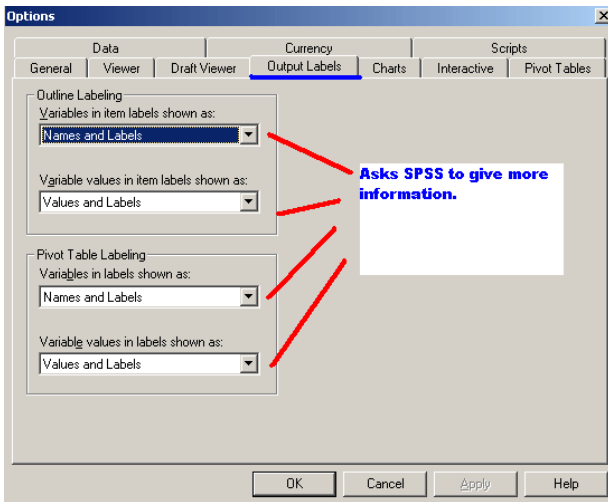
4. Draft Viewer. I prefer the Draft Viewer to the other viewer available in SPSS. We asked to use the Draft Viewer on the General Tab, above. I find it easier to navigate in the Draft Viewer, and easier to copy syntax and output from it into other software.

I find that it is very helpful when debugging programs to have the commands displayed in the log. Also, if you use point and click, the commands created by your point and click sequence will be displayed in the log. You can copy and paste them into a syntax window.

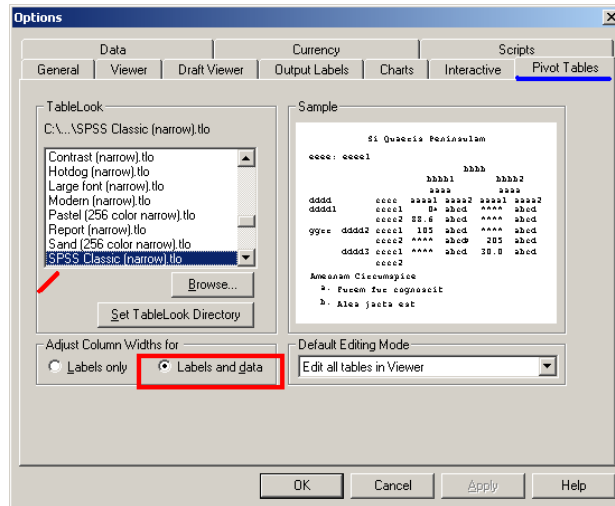


¹Prepared by Patty Glynn, University of Washington. 6/15/02 C:\all\help\helpnew\config_spss.wpd

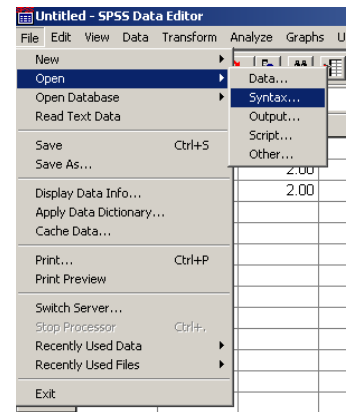
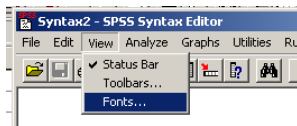
5. Output Labels



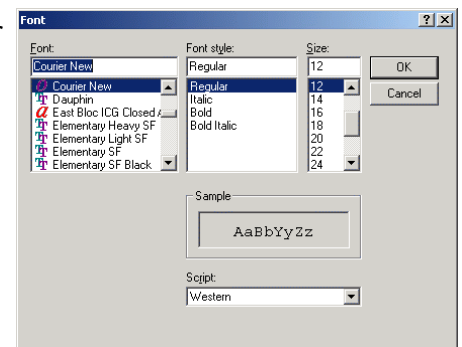
6. Pivot Tables



- After you are finished with these configurations, click on OK.
- If you do not have a syntax window open, you may open one using the point and click sequence shown on the right.
- Once you have a syntax window open, click on View and then Fonts.



- Choose a Courier or Courier New font. Courier fonts are “fixed” rather than “proportional”. This means that each letter and uses the same amount of space. You will find that it will be easier to visually debug your programs if you are able to line up commands.
- Click on OK.



- Some of the changes will not take place until you exit and then get back into SPSS. Do this, and see how you like your new configuration.